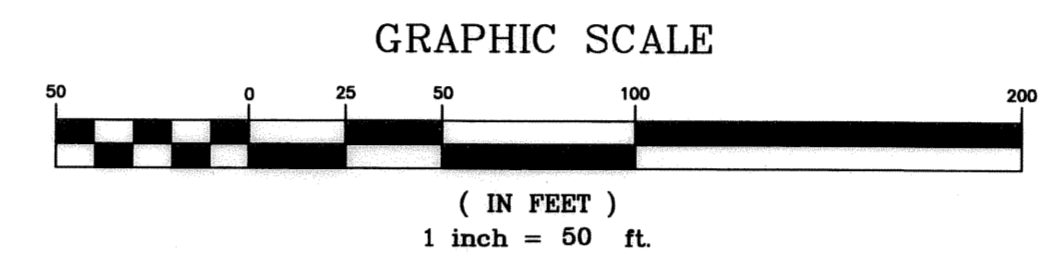
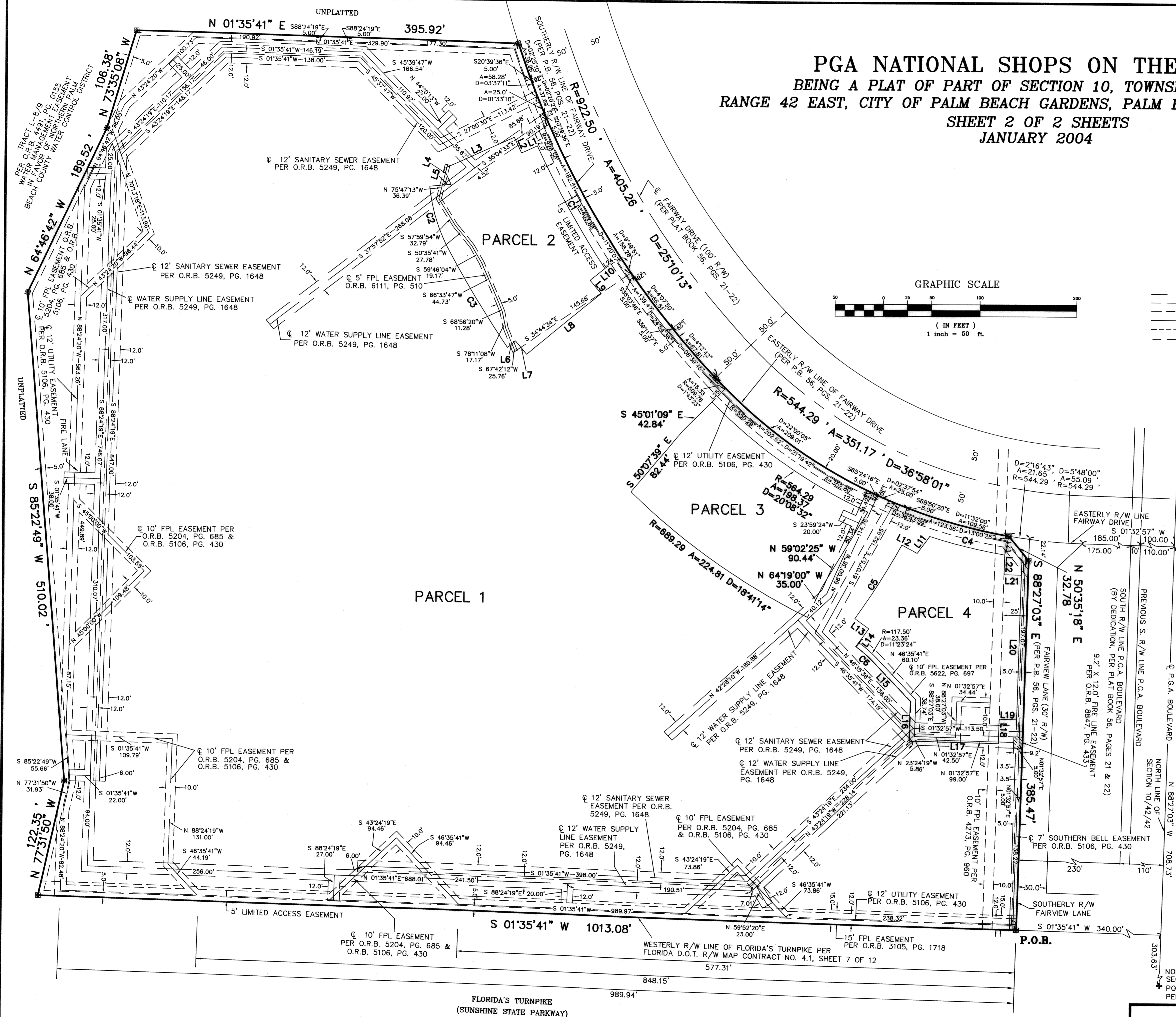
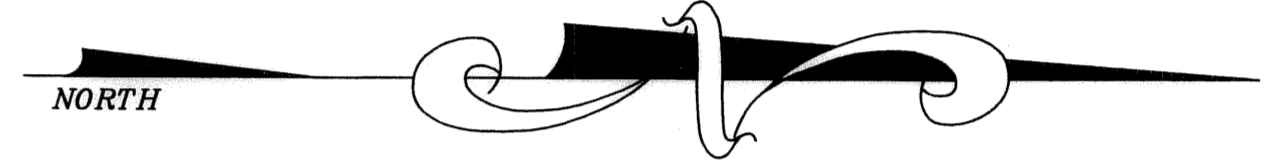


**PGA NATIONAL SHOPS ON THE GREEN**  
 BEING A PLAT OF PART OF SECTION 10, TOWNSHIP 42 SOUTH,  
 RANGE 42 EAST, CITY OF PALM BEACH GARDENS, PALM BEACH COUNTY, FLORIDA  
 SHEET 2 OF 2 SHEETS  
 JANUARY 2004



- LEGEND:**
- ☒ = PRM "LB 4318"
  - = WATER EASEMENTS
  - - - = SANITARY EASEMENTS
  - - - = FPL & UTILITY EASEMENTS
  - - - = SOUTHERN BELL EASEMENTS
  - - - = FIRE LINE EASEMENT
  - - - = LIMITED ACCESS EASEMENT



- ABBREVIATIONS:**
- O.R.B. = OFFICIAL RECORD BOOK
  - P.C. = PAGE
  - P.G.S. = PAGES
  - R/W = RIGHT OF WAY
  - R = RADIUS
  - FPL = FLORIDA POWER AND LIGHT COMPANY
  - D = ARC LENGTH
  - Δ = DELTA ANGLE
  - P.O.C. = POINT OF COMMENCEMENT
  - P.O.B. = POINT OF BEGINNING
  - P.B. = PLAT BOOK
  - D.O.T. = DEPARTMENT OF TRANSPORTATION
  - © = CENTERLINE

L1	S 24°45'36" E	18.00'
L2	S 65°14'24" W	18.00'
L3	S 24°45'36" E	80.00'
L4	S 65°14'24" W	18.00'
L5	S 05°38'48" E	22.28'
L6	N 39°48'43" W	10.82'
L7	N 50°14'17" E	18.00'
L8	N 39°45'43" W	100.00'
L9	S 50°14'17" W	18.00'
L10	N 39°45'43" W	19.85'
L11	S 53°39'30" E	21.95'
L12	S 28°50'33" E	18.00'
L13	S 36°10'58" E	18.00'
L14	S 53°49'02" E	22.92'
L15	N 46°35'41" E	58.03'
L16	S 88°27'03" E	41.67'
L17	N 01°32'57" E	92.61'
L18	N 88°27'03" E	25.85'
L19	N 01°32'57" E	18.00'
L20	N 88°27'03" W	150.00'
L21	N 01°32'57" W	18.00'
L22	N 88°27'03" W	20.39'
L23	S 78°20'24" W	20.01'
L24	S 33°34'30" E	20.00'
L25	S 45°01'09" E	20.00'
L26	S 20°39'18" E	(RADIAL)
L27	S 22°59'46" E	(RADIAL)
L28	S 35°03'48" E	(RADIAL)
L29	S 39°11'38" E	(RADIAL)
L30	S 65°24'17" E	(RADIAL)

CURVE	DELTA	RADIUS	ARC	CHORD	TANGENT	CHORD BRG.
C1	8°48'53"	942.50'	145.00'	144.86'	72.64'	N 60°49'56" E
C2	22°14'37"	172.50'	65.97'	66.55'	33.91'	N 73°13'52" E
C3	6°26'11"	1072.50'	120.48'	120.42'	60.30'	N 58°53'19" E
C4	8°07'22"	564.29'	80.00'	79.93'	40.07'	N 13°45'40" E
C5	7°40'25"	672.00'	90.00'	89.93'	45.07'	N 57°39'15" W
C6	11°26'12"	112.50'	22.46'	22.42'	11.27'	S 40°52'35" W

**P.O.C.**  
 NORTHEAST CORNER  
 SECTION 10/42/42  
 POSITION CALCULATED  
 PER DESCRIPTION

**PGA NATIONAL SHOPS ON THE GREEN**

**NMI**  
 NICK MILLER, INC.  
 2560 RCA BLVD, STE 105, PALM BEACH GARDENS, FL 33410  
 TEL: 561.627.5200 FAX: 561.627.0983 www.nickmillerinc.com  
 D.B.P.R. BUSINESS LICENSE NO. 4318

SHEET NO.	SCALE: 1" = 50'
2 OF 2	DATE: JANUARY 2004
	JOB NO. 89105SE-U
	FILE: 89105SE-U